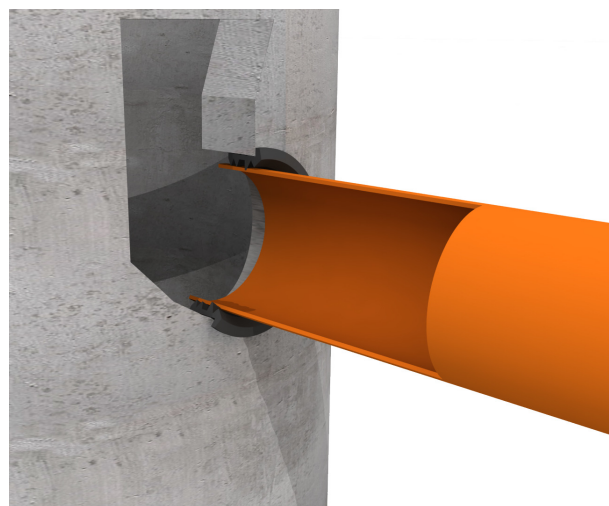
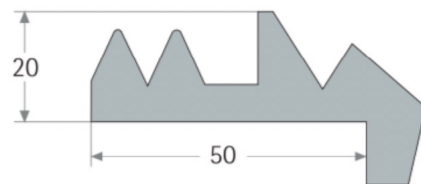


Anboringsmanchet – Type ACT

- Tykkelse 20mm
- Tilslutter rør af forskelligt materiale, brønde, sivebrønde og betonkonstruktioner.
- Rør fra DN 100 – 6000mm.
- Deformation mellem 32 og 38%
- EPDM Gummi
- Hårdhed 50+-5 IHRD
- Standard UNE-EN 681-1
- Monteres med glidemiddel



Ø Dim. mm.	Ø Udv. Diameter mm. Pipe	Ø Dim.	Ø Borehul	Tykkelse mm.
DN-50	50 mm.	76	1 mm.	20
DN-75	75 mm.	101	1 mm.	20
DN-110	110 mm.	138	1 mm.	20
DN-125	125 mm.	151	1 mm.	20
DN- 160	160 mm.	186	1 mm.	20
DN-200	200 mm.	226	1 mm.	20
DN-225	225 mm.	251	1 mm.	20
DN-250	250 mm.	276	1 mm.	20
DN-280	280 mm.	306	1 mm.	20
DN-300	315 mm.	341	1 mm.	20
DN-400	400 mm.	426	1 mm.	20
DN-500	500 mm.	526	1 mm.	20
DN-630	630 mm.	656	1 mm.	20