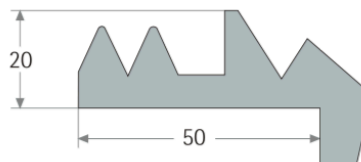
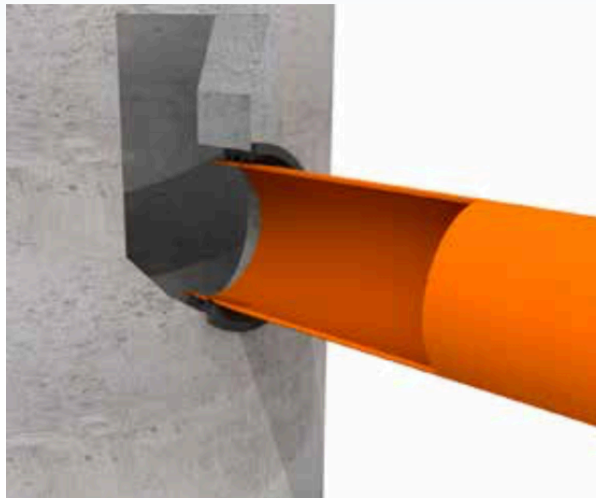


Anboringmanchet Type ACT



- Tykkelse 20

- Tilslutter rør af forskelligt materiale, brønde, sivebrønde og betonkonstruktioner.
- Rør fra DN 100 - 6000mm.
- Deformation mellem 32 og 38 %
- EPDM gummi
- Hårdhed 50+/-5 IHRD
- Standard UNE-EN 681-1
- Monteres med glidemiddel

Ø Dim. mm.	Ø udv. Diameter mm.pipe	Ø Dim.	Ø Borhul	Tykkelse mm.
DN-50	50 mm.	76	1 mm.	20
DN-75	75 mm.	101	1 mm.	20
DN-110	110 mm.	138	1 mm.	20
DN-125	125 mm.	151	1 mm.	20
DN-160	160 mm.	186	1 mm.	20
DN-200	200 mm.	226	1 mm.	20
DN-225	225 mm.	251	1 mm.	20
DN-250	250 mm.	276	1 mm.	20
DN-280	280 mm.	306	1 mm.	20
DN-300	315 mm.	341	1 mm.	20
DN-400	400 mm.	426	1 mm.	20
DN-500	500 mm.	526	1 mm.	20
DN-630	630 mm.	656	1 mm.	20

Synthetic Ethylene Propylene Rubber (EPDM).
Designed for the watertightness of sewers made for the draining of rain water and wastes.
Hardness: 50 ±5 IRHD.

Rubber designed under the UNE-EN 681-1 standard.
In case of residual water mixed with wastes such as oil, petrol or fuel, the joints can be manufactured in Acrylonitrile Butadiene Rubber (NBR).
Joints can be manufactured using other types of elastomers.